

*TIBER LINEAR PARK*  
*AN ECO-STRUCTURAL BRIDGE*

*Andrew Kranis M.Arch, LEED A.P., FAAR*

## *"SUSTAINABILITY"*

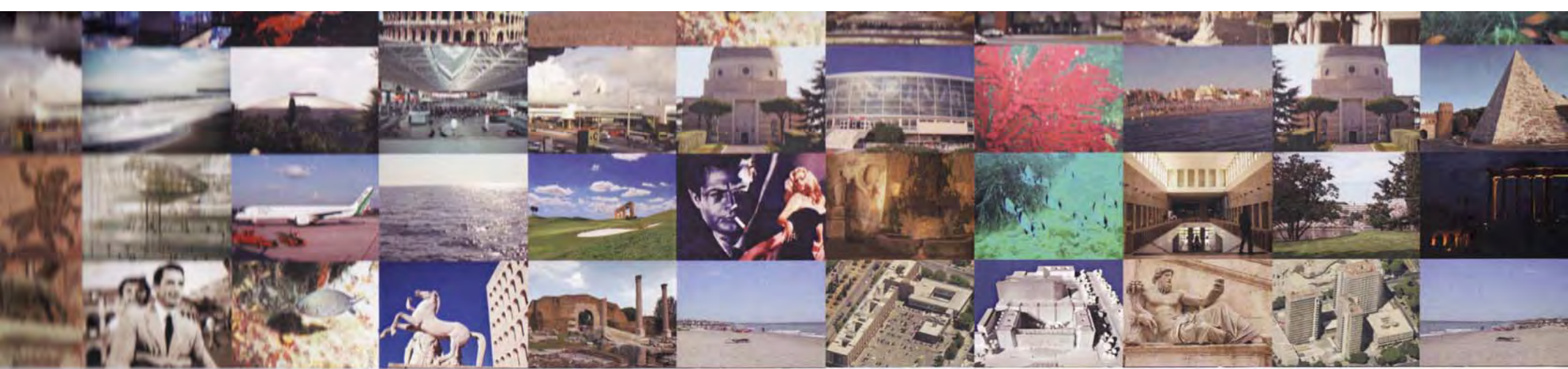
*"We are not likely to be granted another world to plunder in compensation for our plunder of this one."*

*Wendell Berry, poet (2008)*

## *"INTEGRATED DESIGN"*

*"You know you are on the right track  
when your solution for one problem  
accidentally solves several others."*

*Michael Corbett, architect/developer (1979)*



# 2° POLO TURISTICO DI ROMA

ASSESSORE AL TURISMO SEN. MAURO CUTRUFO







Stazione San Pietro

Nuova Fermata F.S.

Civitavecchia S. Pietro F.S.

Possibile Locazione Alternativa  
del Parco a tema

Parco a tema

Nuovo casello  
Interporto

Interporto  
Fiumicino

Aeroporto  
Leonardo da Vinci

Nuova Fiera di Roma

Campo da Golf  
Ponte Galeria

Nuovo Centro  
Convegni/Congressi

Approdo con Darsena

Collegamento  
A12 via C.Colombo

Riqualificazione  
via dell'aeroporto

Approdo lungo il Tevere

Ponte della Scafa

Bretella di Ostia

Sistema TPL

Riqualificazione via del Mare

Corridoio Tirrenico Sud

Campo da Golf  
Muratella

Circuito Formula 1  
Ex Velodromo

Palazzo della Civiltà Italiana

Nuvola di Fuksas

Centro Renzo Piano

Mediterraneum  
Acquario di Roma

Approdo lungo il Tevere

Funivia tra la stazione di Villa Bonelli e  
la Stazione Magliana

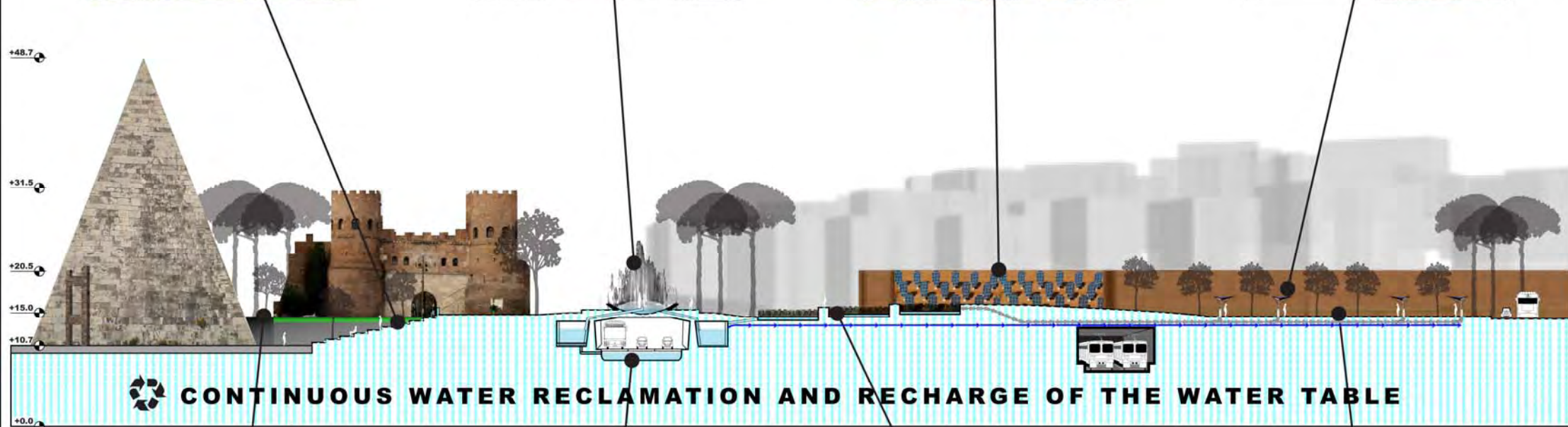




*PIAZZA DELLA PIRAMIDE: A SUSTAINABLE LINK BETWEEN HISTORIC AND FUTURE ROME*







**100'**  
**30m**

**Longitudinal section through new Piazza della Piramide**





AGRI-METRO AT GAZOMETRO: VERTICAL FARM ON THE TIBER







CHE COSA

AMAR

FRANCO

YUP

12/1

LYNN





[8.] *Il Porto di Ripetta verso Ponente*  
1880  
acquerello, mm 557 × 792  
MR 89



[8.] *The port of Ripetta facing west*  
1880  
watercolour, 557 × 792 mm  
MR 89

*(NOV 2008)*





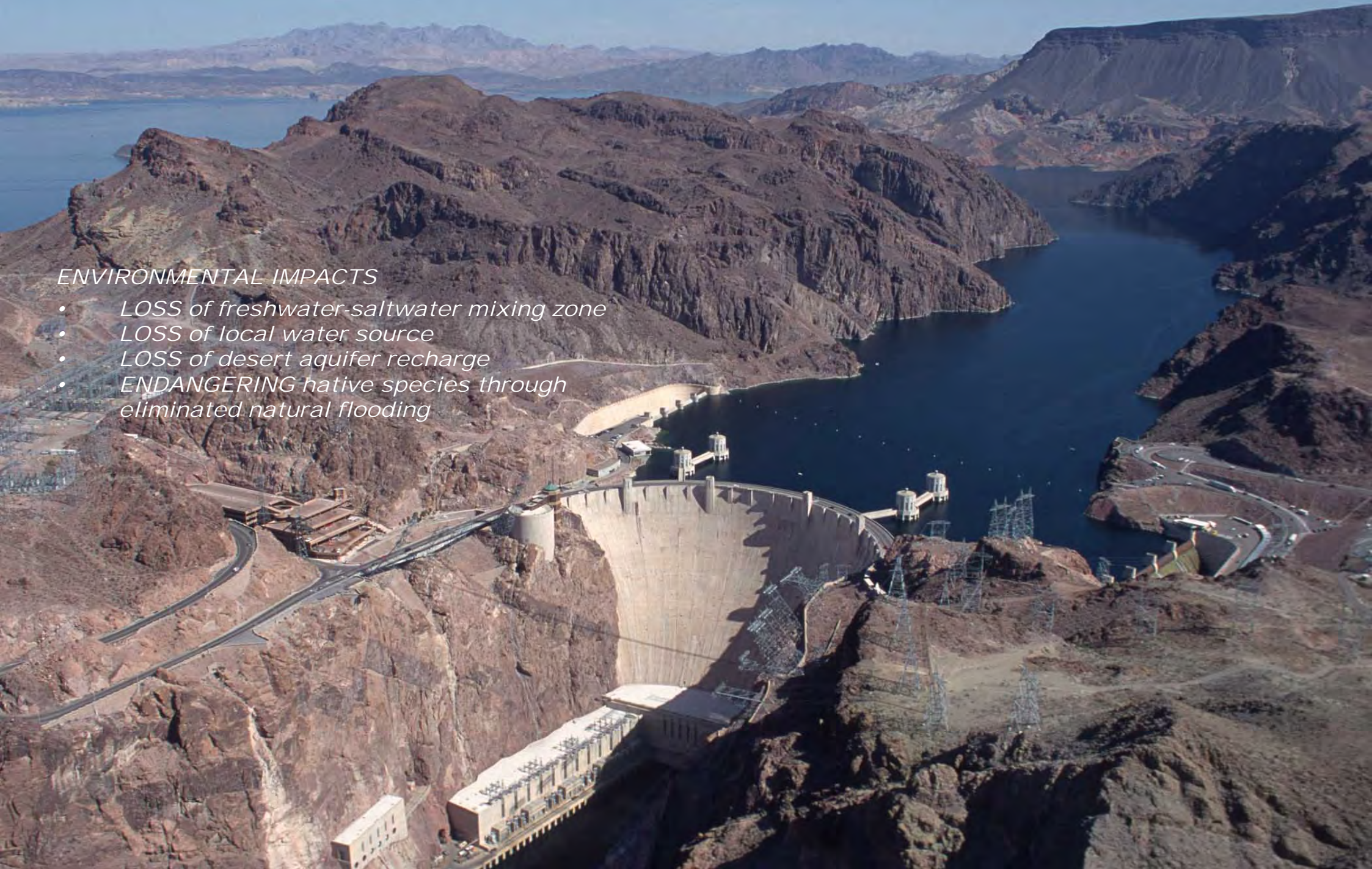
*"MURAGLIONI" TIBER EMBANKMENT WALLS (1876 - 1926)*



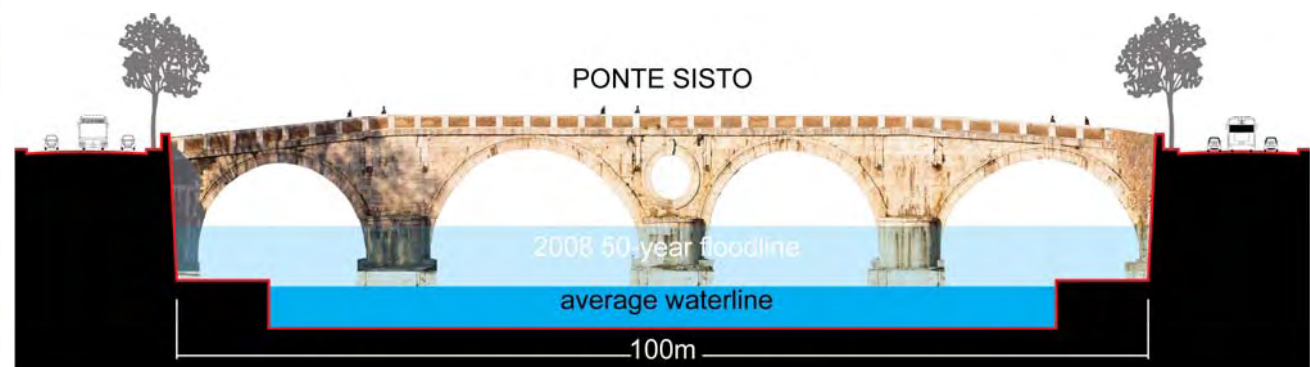
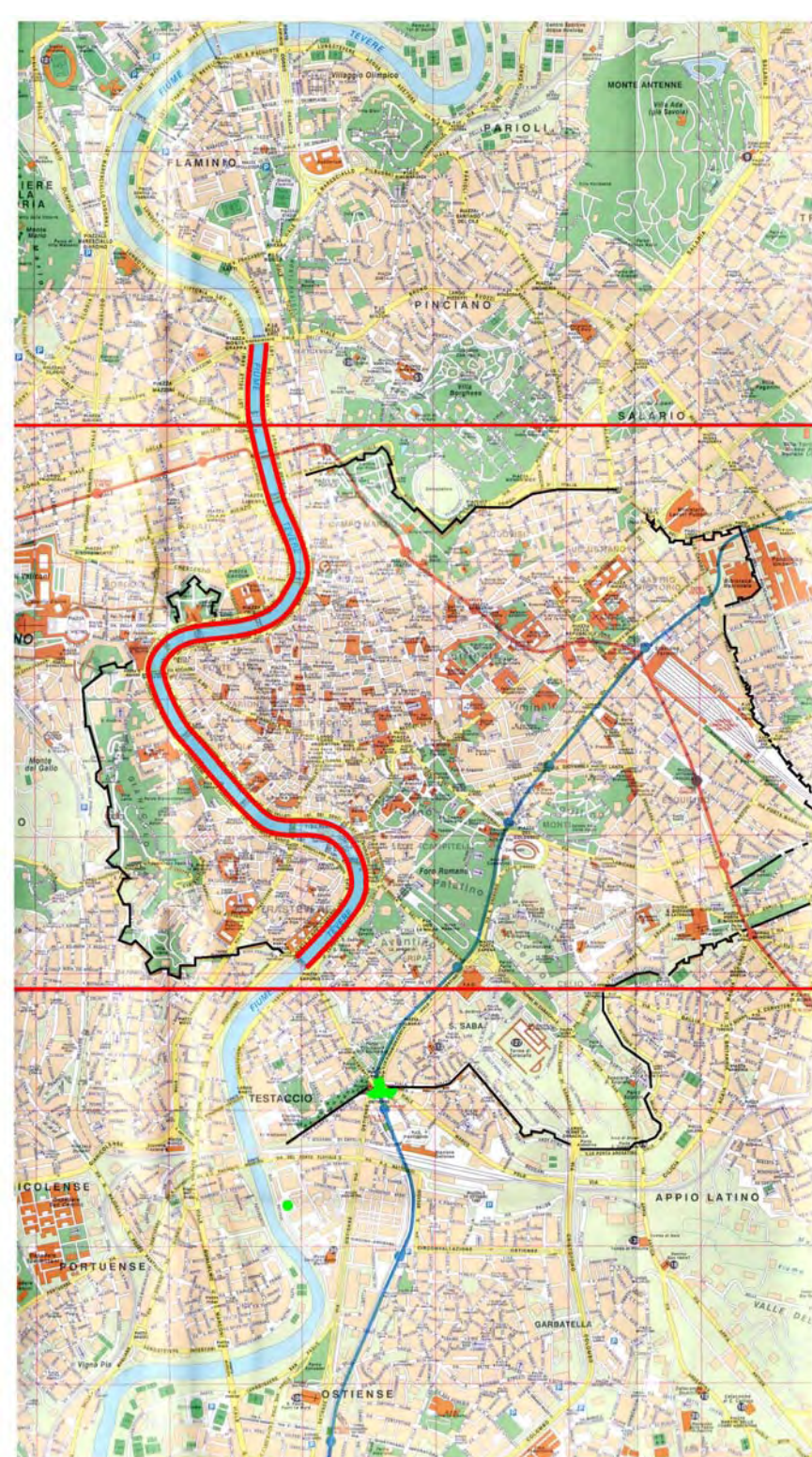


*ENVIRONMENTAL IMPACTS*

- *LOSS of freshwater-saltwater mixing zone*
- *LOSS of local water source*
- *LOSS of desert aquifer recharge*
- *ENDANGERING native species through eliminated natural flooding*

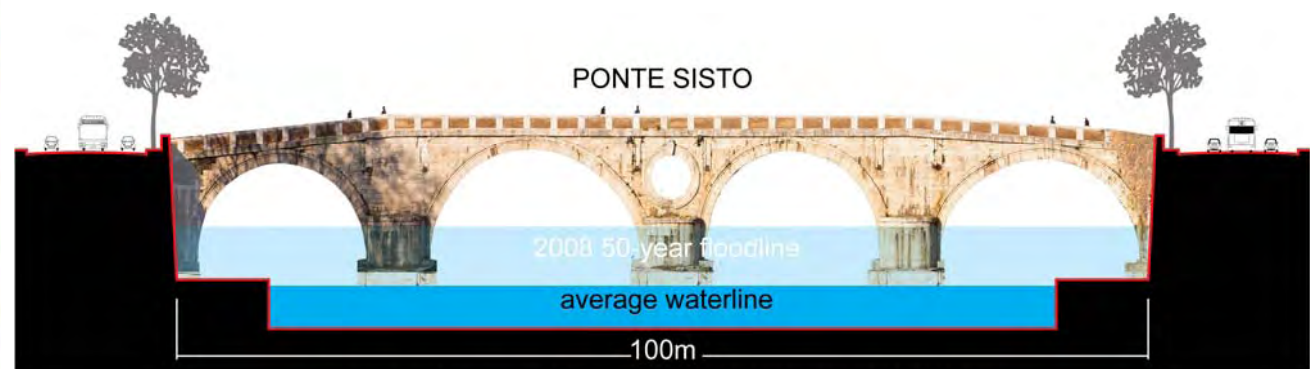
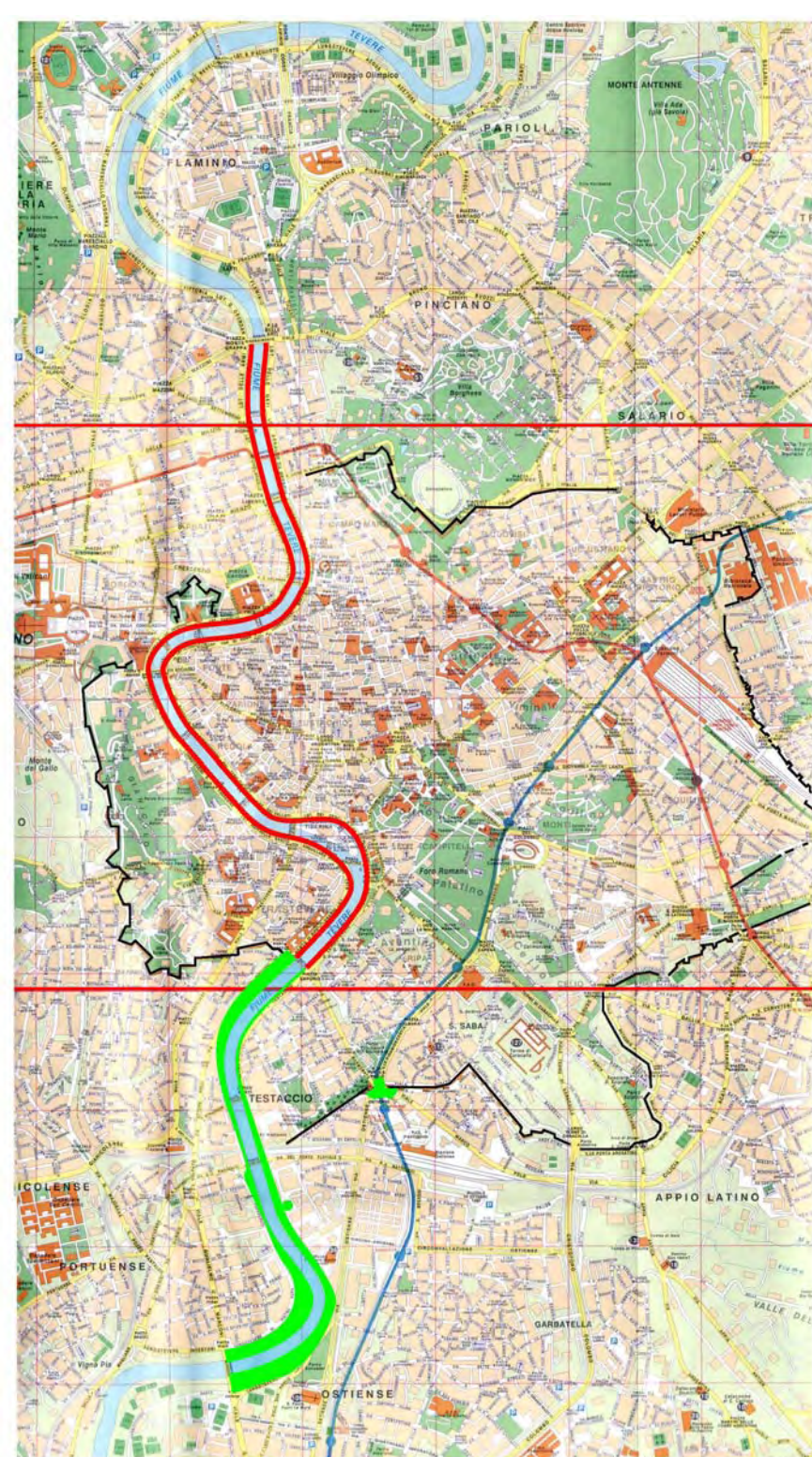




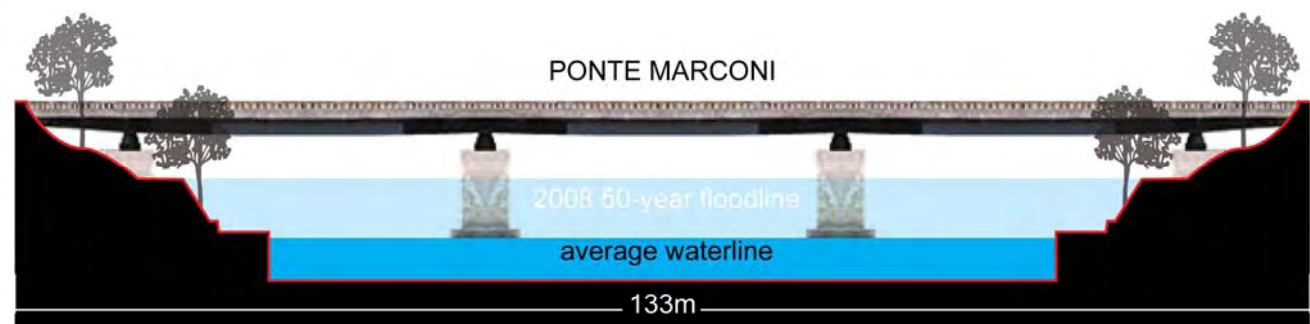


The muraglione are 15m (49 ft.) high through central Rome.





The muraglione are 15m (49 ft.) high through central Rome.



The "natural embankments" are also 15m (49 ft.) high but incrementally rise to meet the urban fabric.



*PRECEDENTS*  
*BROOKLYN BRIDGE PARK*



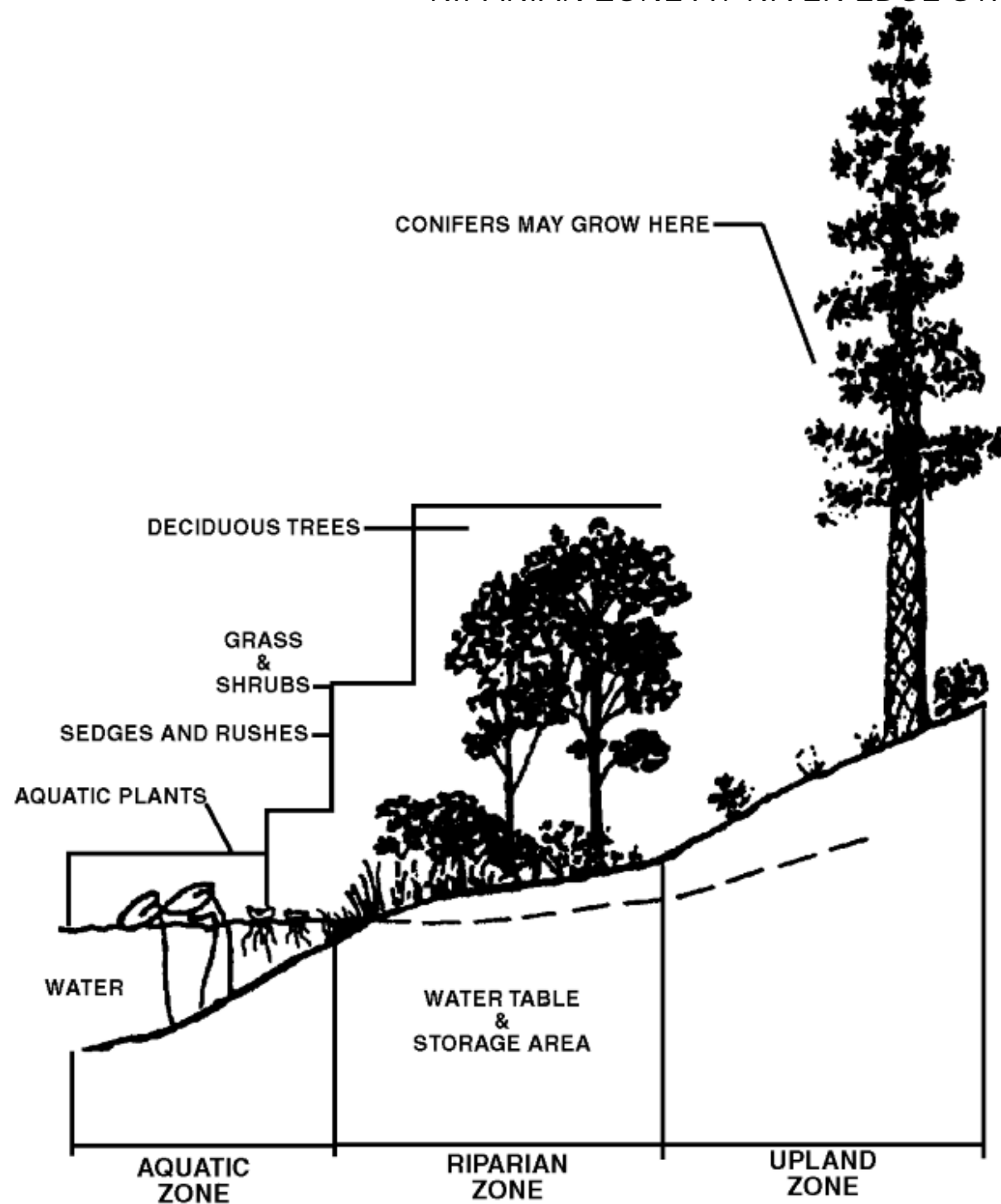








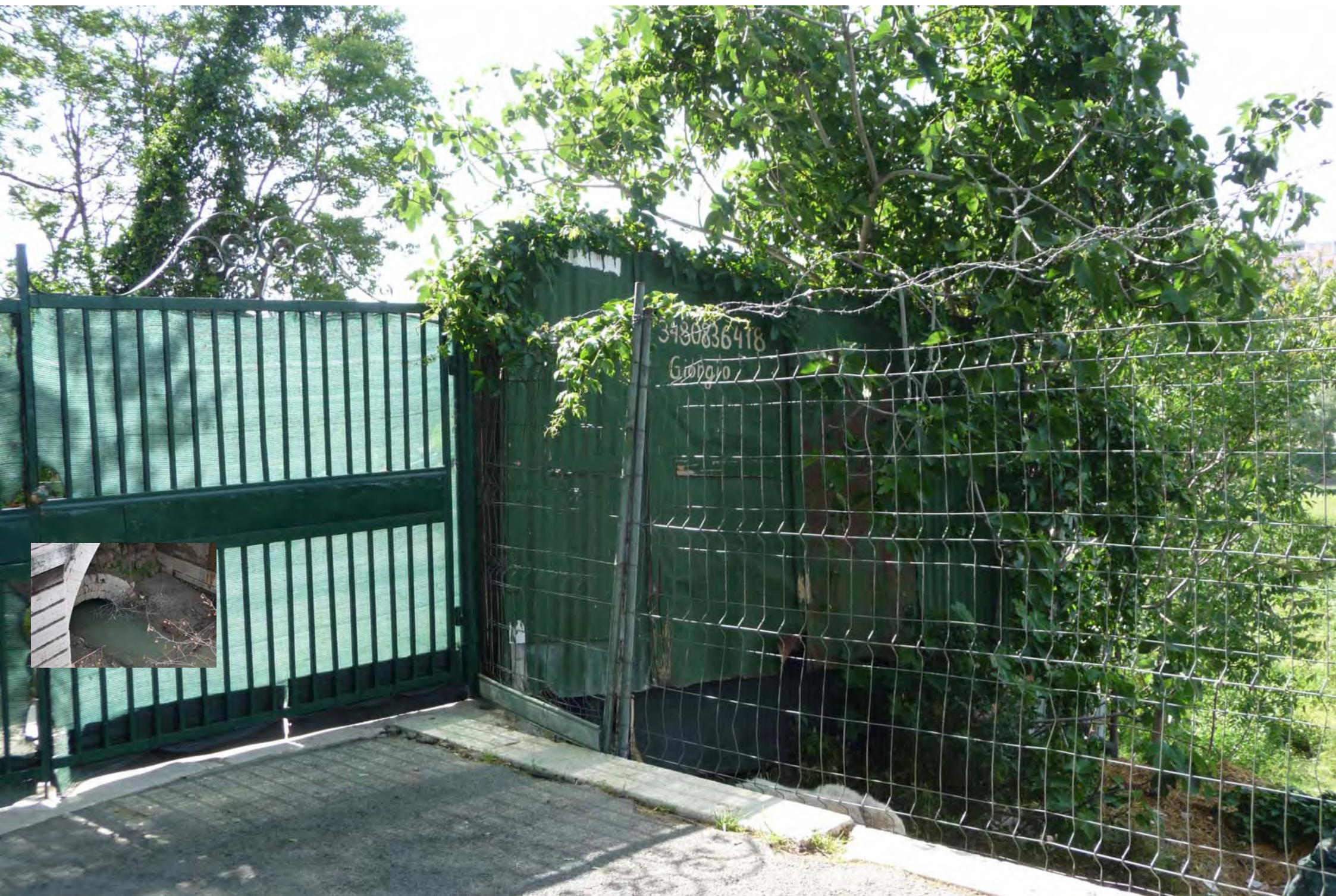
*RIPARIAN ZONE AT RIVER EDGE STABILIZES THE RIVER FLOW*



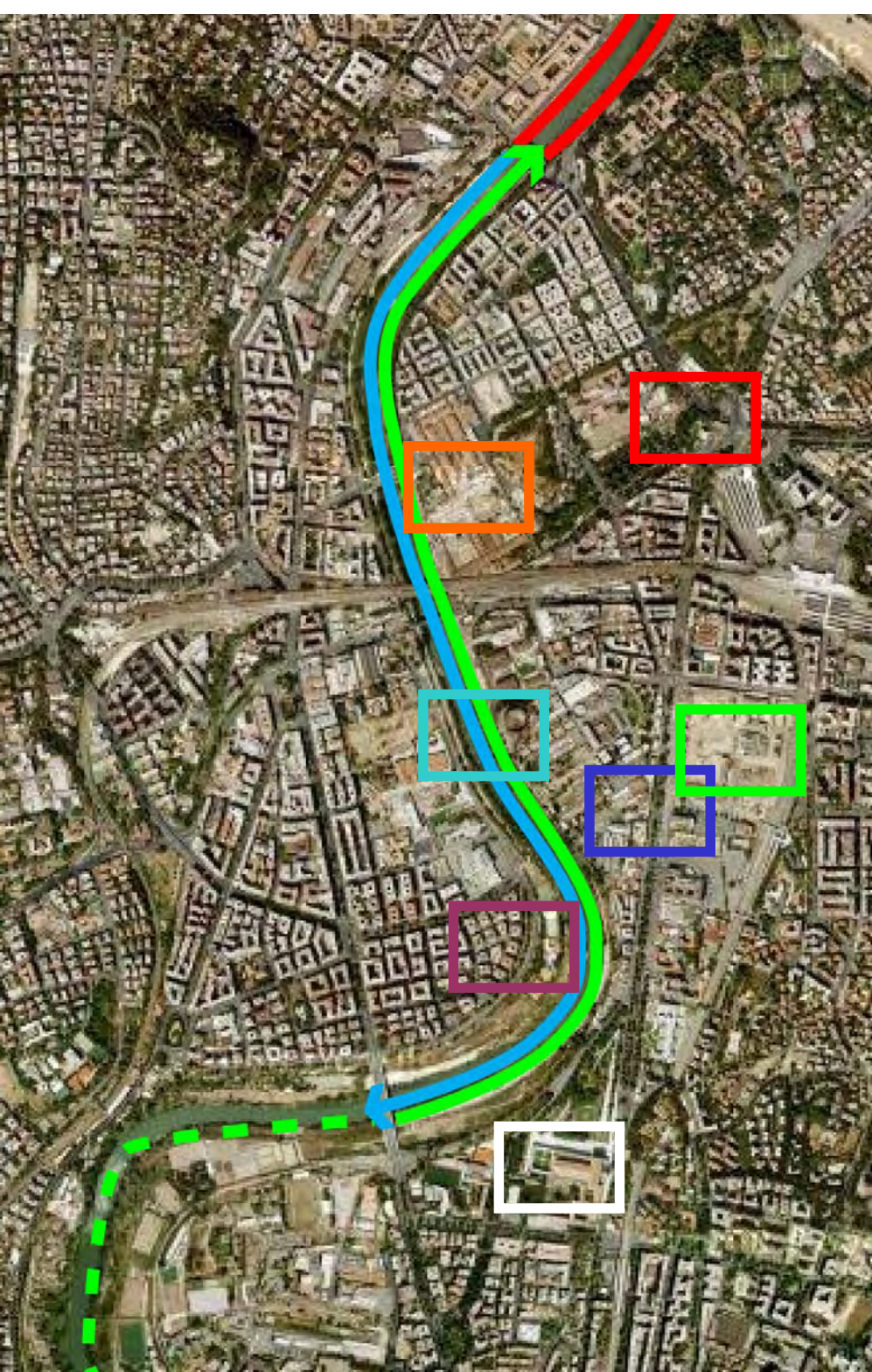














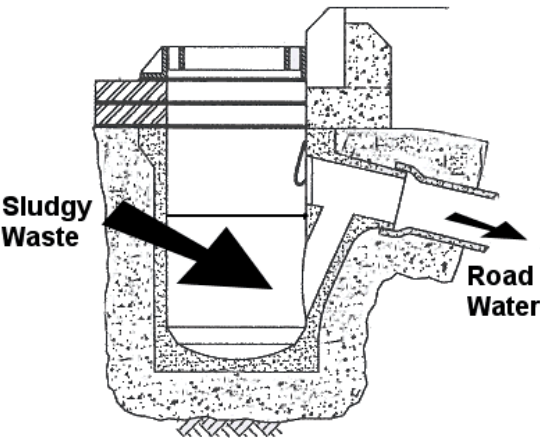
AQUEDUCTS = VISIBILITY + PRACTICALITY



A GRADE BEAM ALONG THE RIVER EDGE CHANNELS COMBINED SEWAGE OVERFLOWS OUT OF THE RIVER



... AND NOURISHES THE VERTICAL FARM?





ROADSIDE LANE



ELEVATED TRANSITION



*THE GRADE BEAM SUPPORTS AN EXTENDED PATH THAT CONVERTS THE EDGE TO A LINEAR PARK*

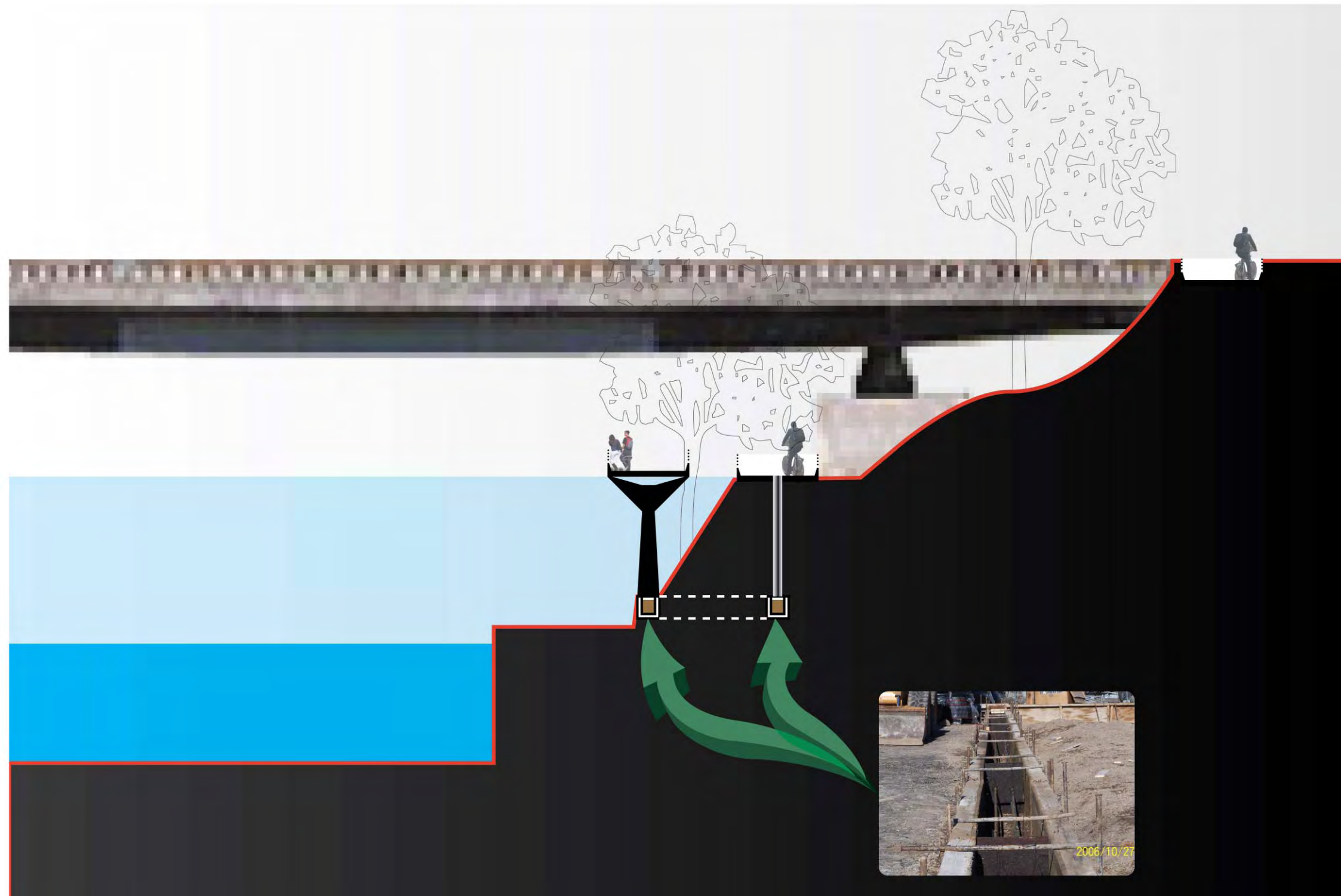
ELEVATED 'BOARDWALK'

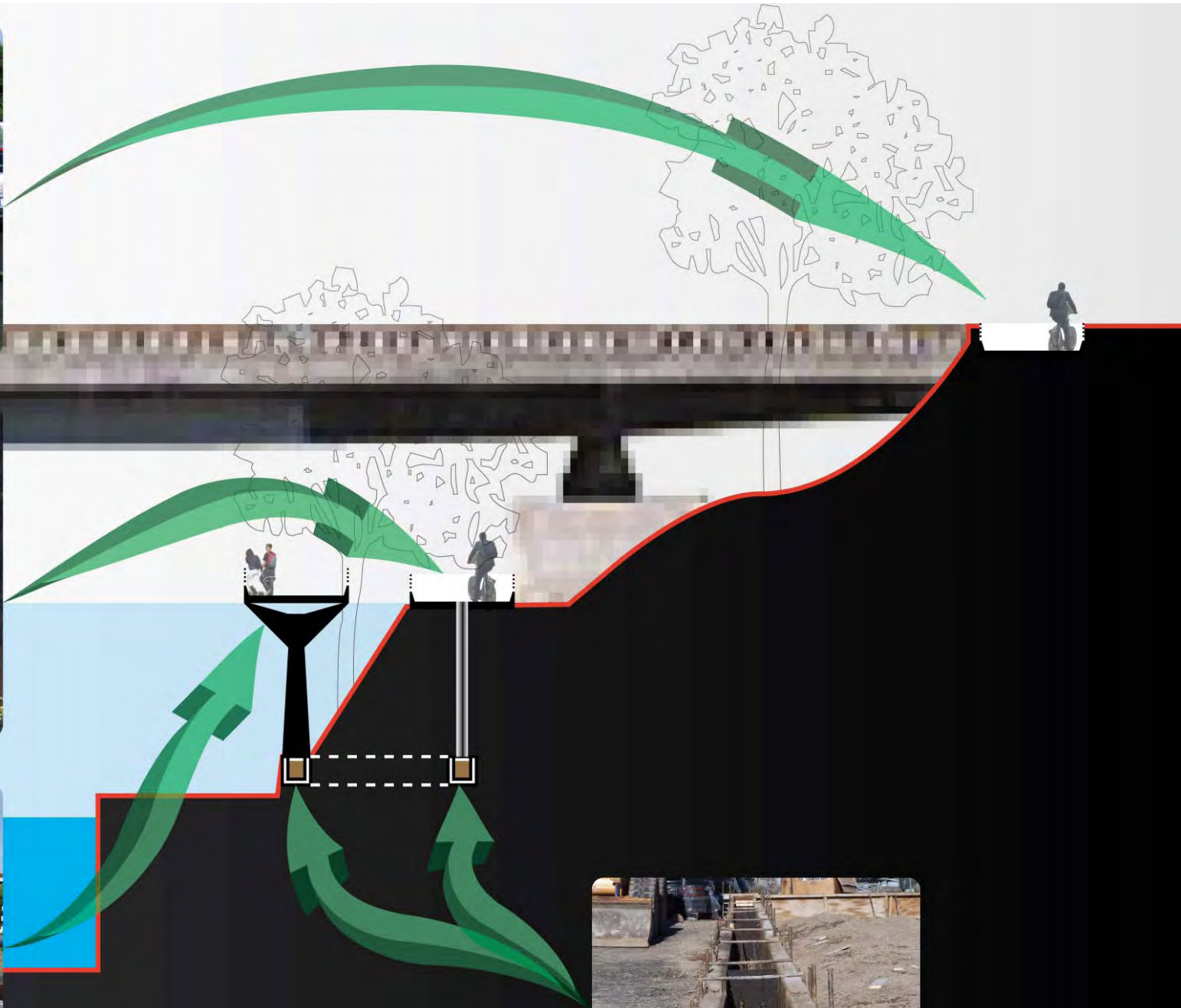


RIPARIAN PATHWAY

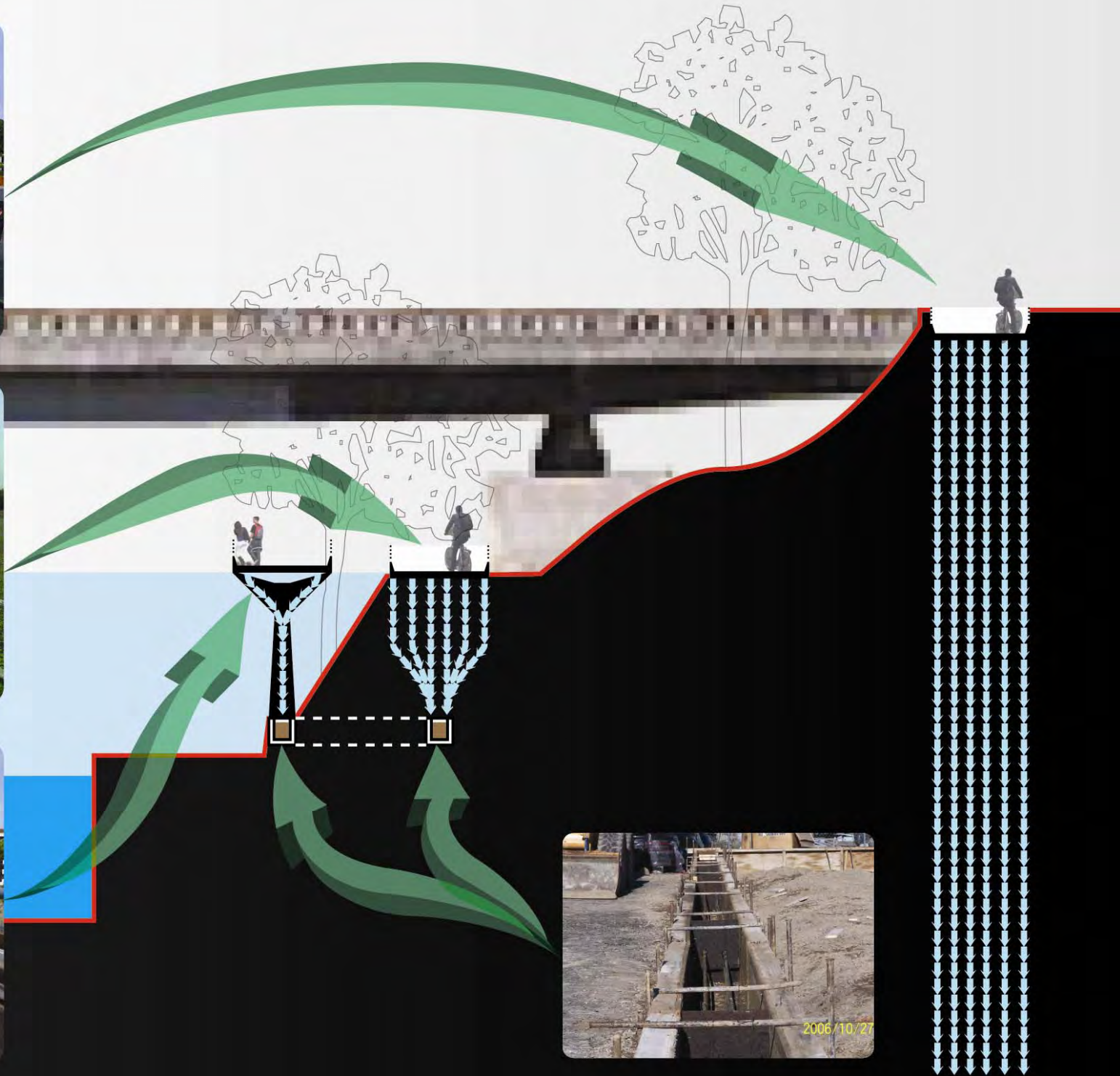




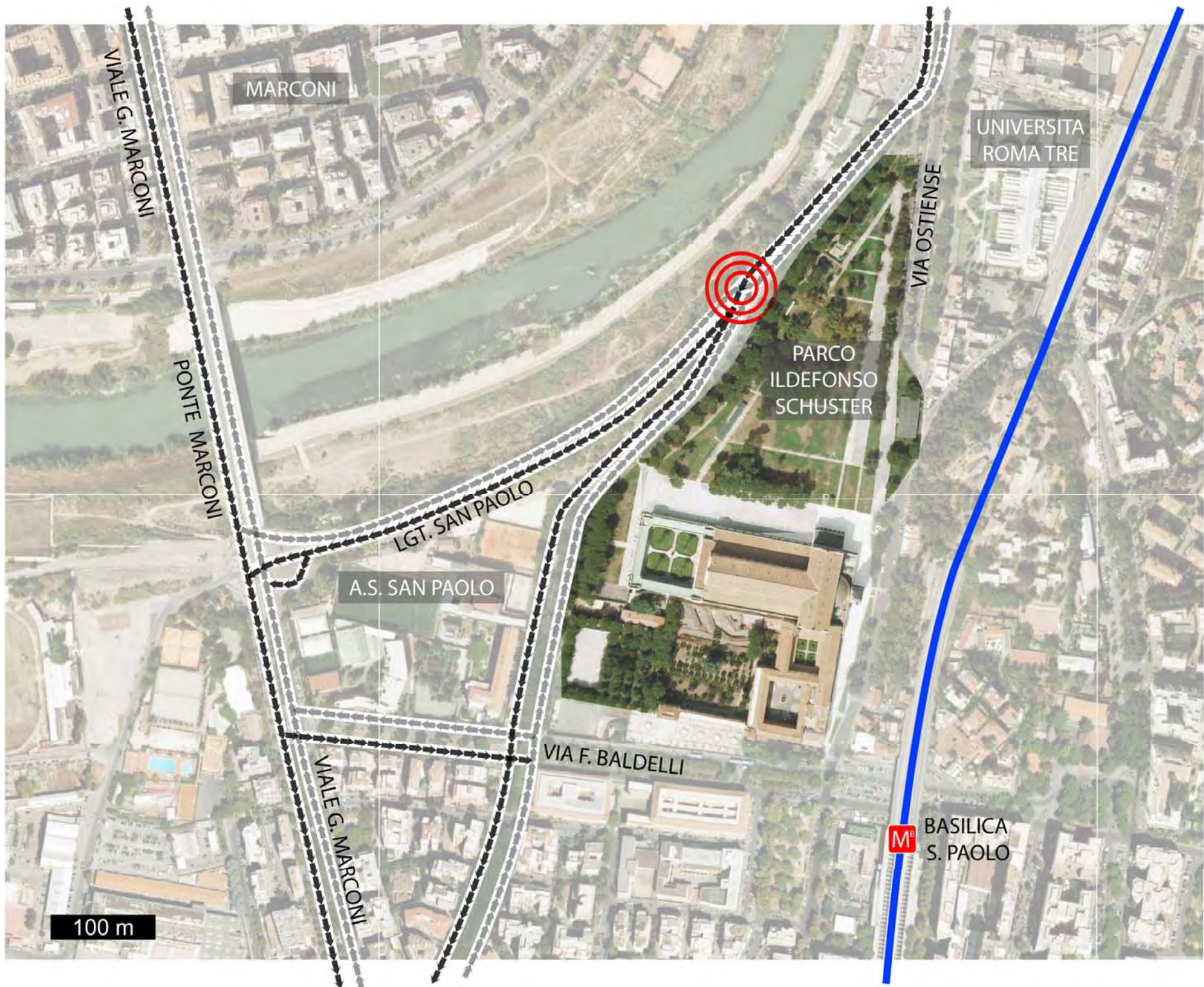




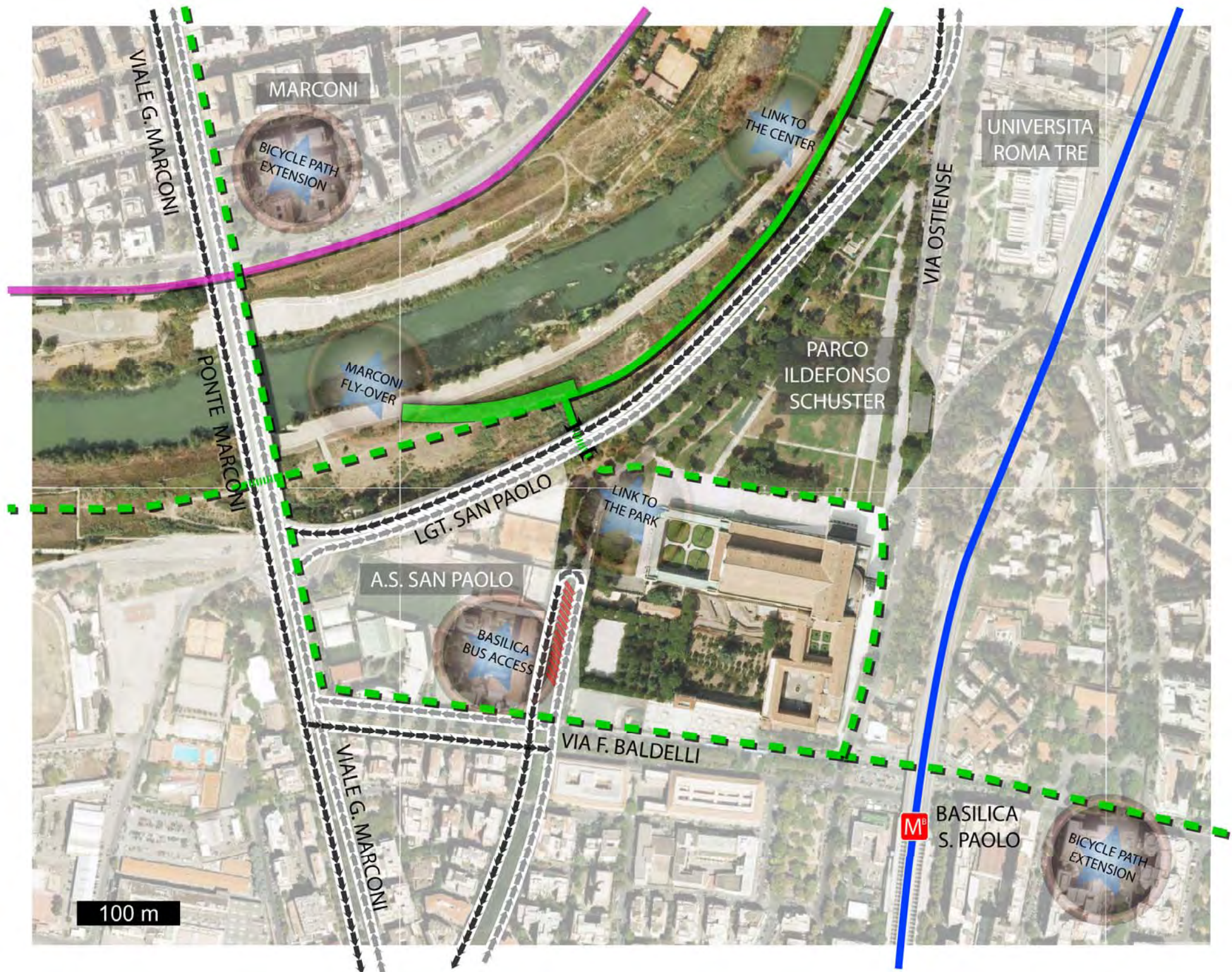
















PIAZZALE  
DI S. PAOLO

P





PIAZZALE  
DI S. PAOLO













# THANK YOU

*Andrew Kranis M.Arch, LEED A.P., FAAR*



The muraglione are 15m (49 ft.) high through central Rome.

